

Postgres Install

[Copied from OneNote: C Chains Developer Guide/Configuration]

Postgres Install

Go to <https://www.postgresql.org/download/> and Select Windows:

Packages and Installers


Select your operating system family:



Click on "Download the Installer"

Windows installers

Interactive installer by EDB

Download the installer  certified by EDB for all supported PostgreSQL versions.

This installer includes the PostgreSQL server, pgAdmin; a graphical tool for managing and developing your database, and a package manager that can be used to download and install additional PostgreSQL tools and drivers. StackBuilder provides management, integration, migration, replication, geospatial, connectors and other tools.

This installer can run in graphical or silent install modes.

The installer is designed to be a straightforward, fast way to get up and running with PostgreSQL on Windows.

Advanced users can also download a **zip archive** of the binaries, without the installer. This download is intended to be used to include PostgreSQL as part of another application installer.


Platform support

The installers are tested by EDB on the following platforms. They can generally be expected to run on other compatible platforms.

PostgreSQL Version	64 Bit Windows Platforms	32 Bit Windows Platforms
13	2019, 2016	
12	2019, 2016, 2012 R2	
11	2019, 2016, 2012 R2	

Select the latest "Windows x86-64bit" version:

PostgreSQL Database Download

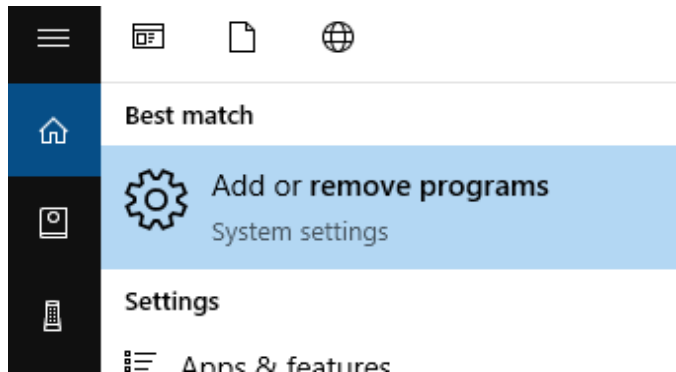
Version	Linux x86-64	Linux x86-32	Mac OS X	Windows x86-64	Windows x86-32
13.1	N/A	N/A	Download	Download 	N/A
12.5	Download	Download	Download	Download	N/A
11.10	Download	Download	Download	Download	N/A
10.15	Download	Download	Download	Download	Download
9.6.20	Download	Download	Download	Download	Download
9.5.24	Download	Download	Download	Download	Download
9.4.26 (Not Supported)	Download	Download	Download	Download	Download

Uninstall older version of Postgres

BEFORE YOU INSTALL: If you already have an OLDER MAJOR version of PostgreSQL (i.e. you are installing 13, but have 12 installed), you should first uninstall the older version.

If the version you are installing is the same MAJOR version as the one you already have installed, you can install in place, but there typically isn't a need to install newer versions of the same MAJOR version of PostgreSQL.


To uninstall from your laptop press START and type "remove programs" and select the following:



Search for Postgre, click on the older version and press "Uninstall":

Installing apps

Choose where you can get apps from. Installing only apps from the Store helps protect your PC and keep it running smoothly.

Allow apps from anywhere 

Apps & features

[Manage optional features](#)





[Manage app execution aliases](#)

Search, sort, and filter by drive. If you would like to uninstall or move an app, select it from the list.

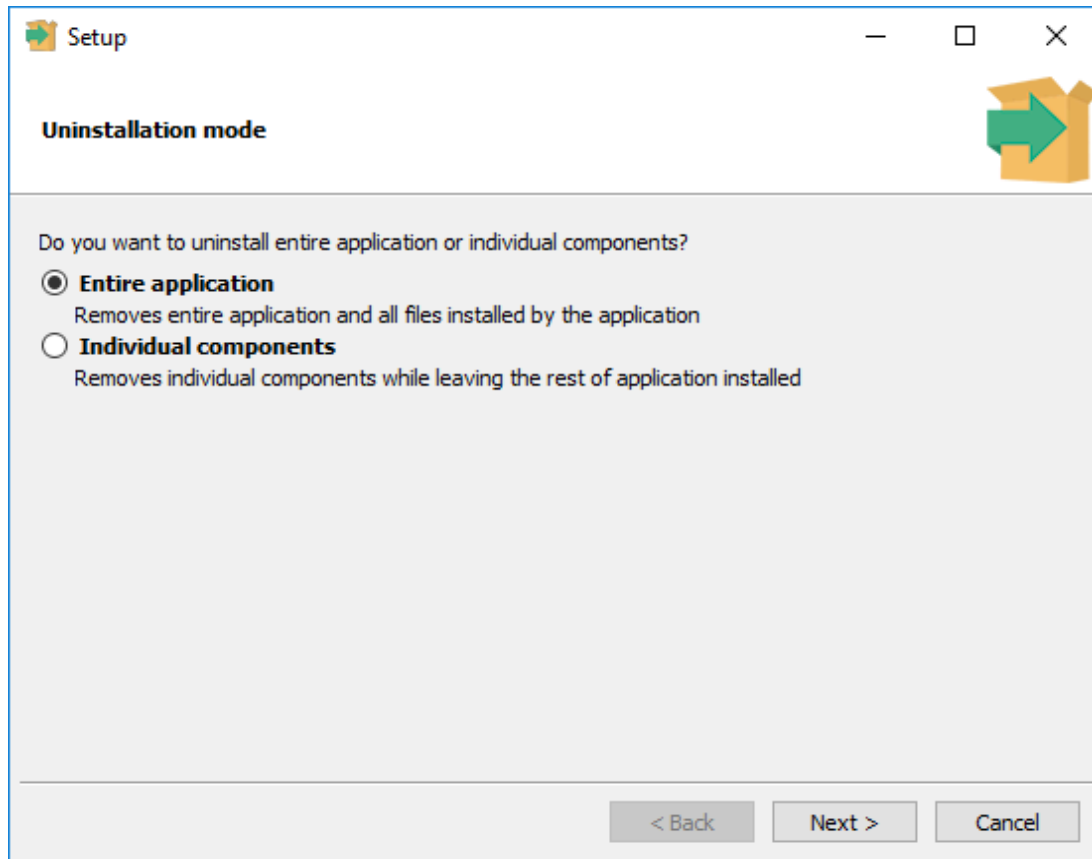
postgre 

Sort by: Name 

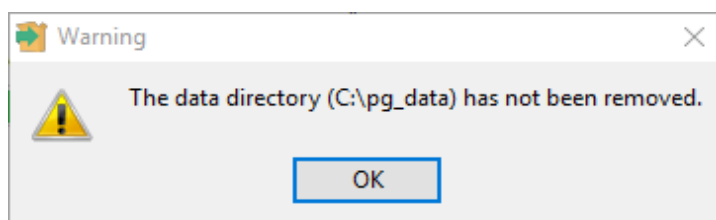
Filter by: All drives 

	PostgreSQL 11 11	562 MB 8/30/2019	
			

Select "Entire application" from the uninstall options:



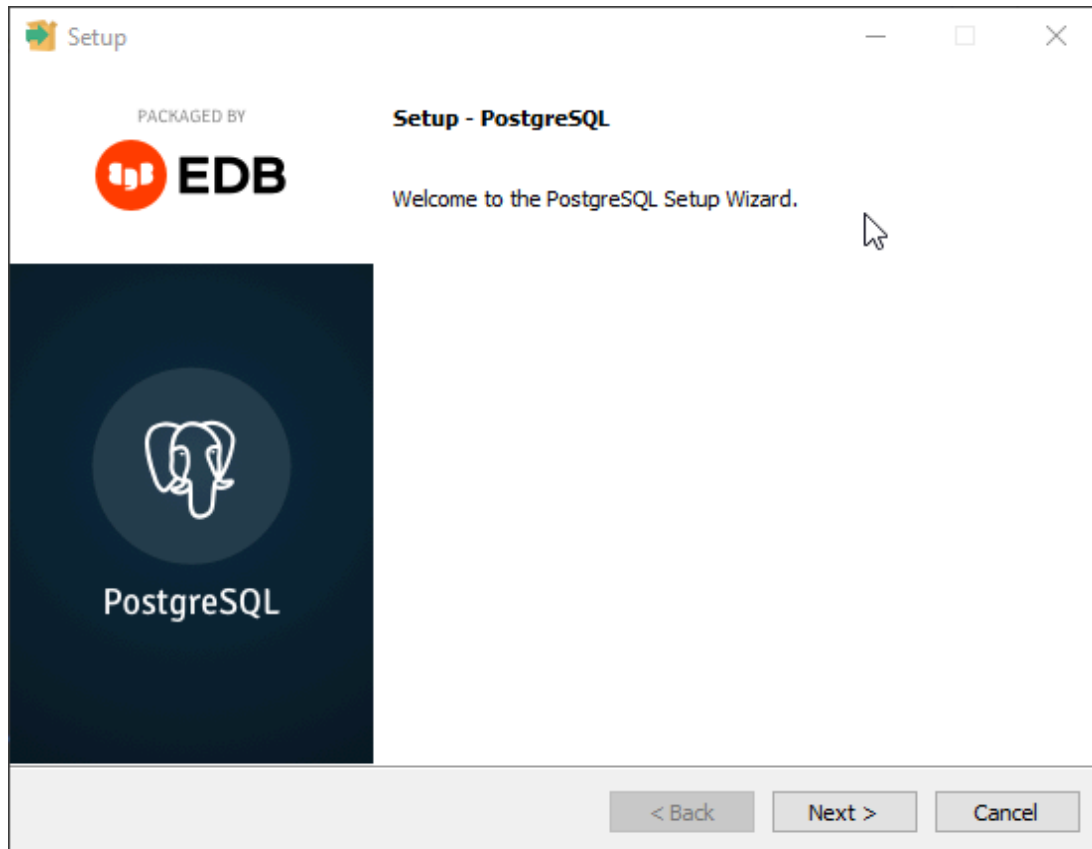
You may get the following warning showing that the data directory is kept. This is fine.



After the uninstall you will need to restart your laptop.

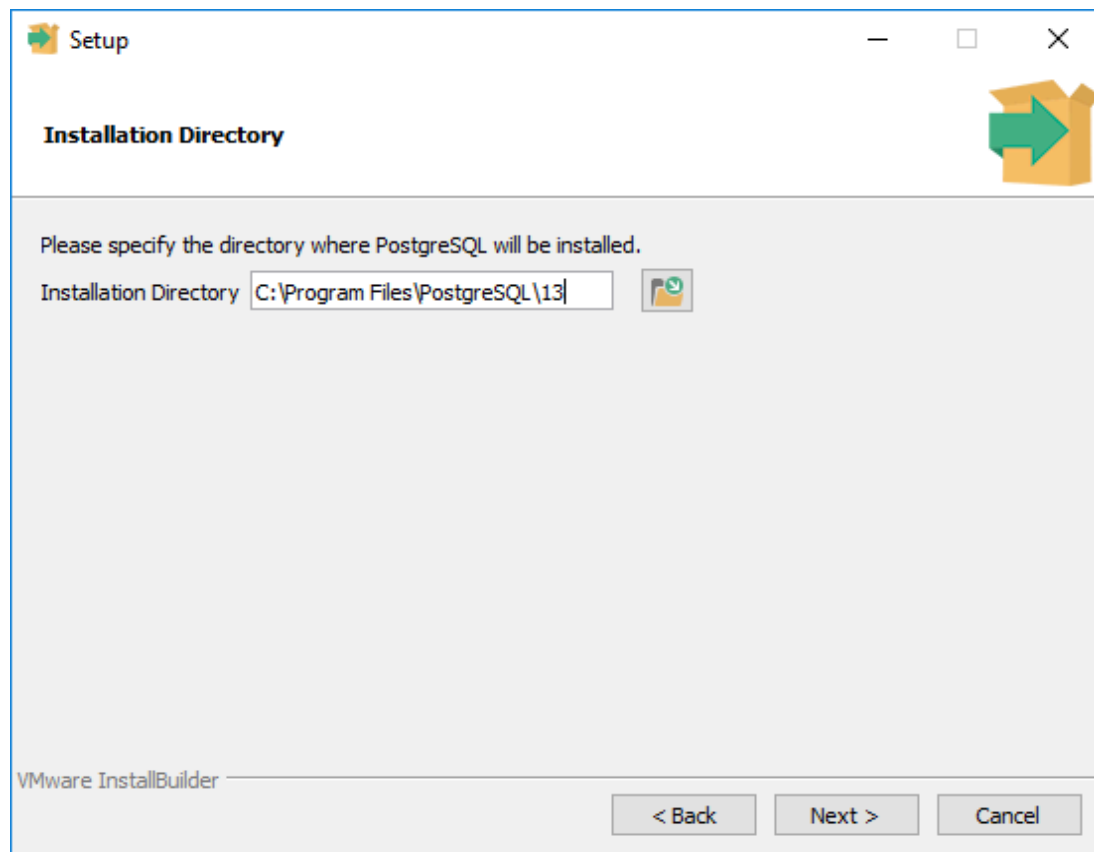
Run PostgreSQL Installer

Run the downloaded installer:

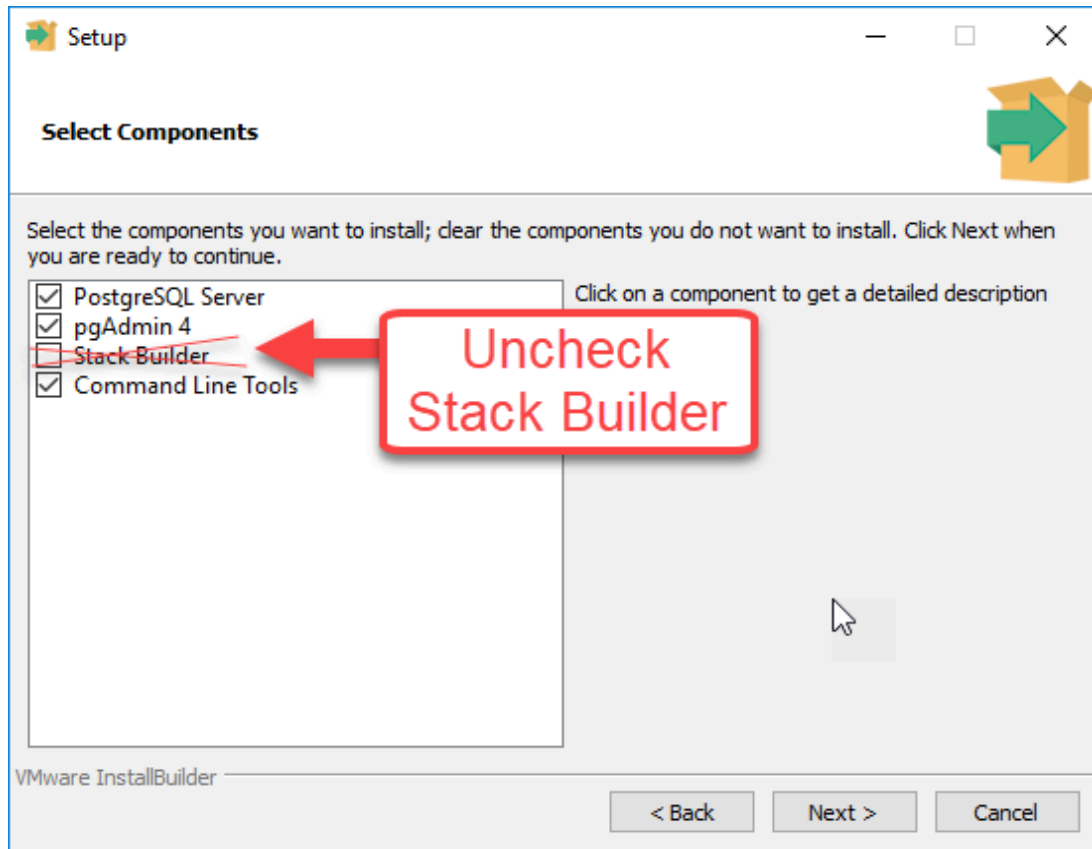


Default Install Dir is fine, but copy/paste it somewhere, because later we will need it when setting up environment variables.

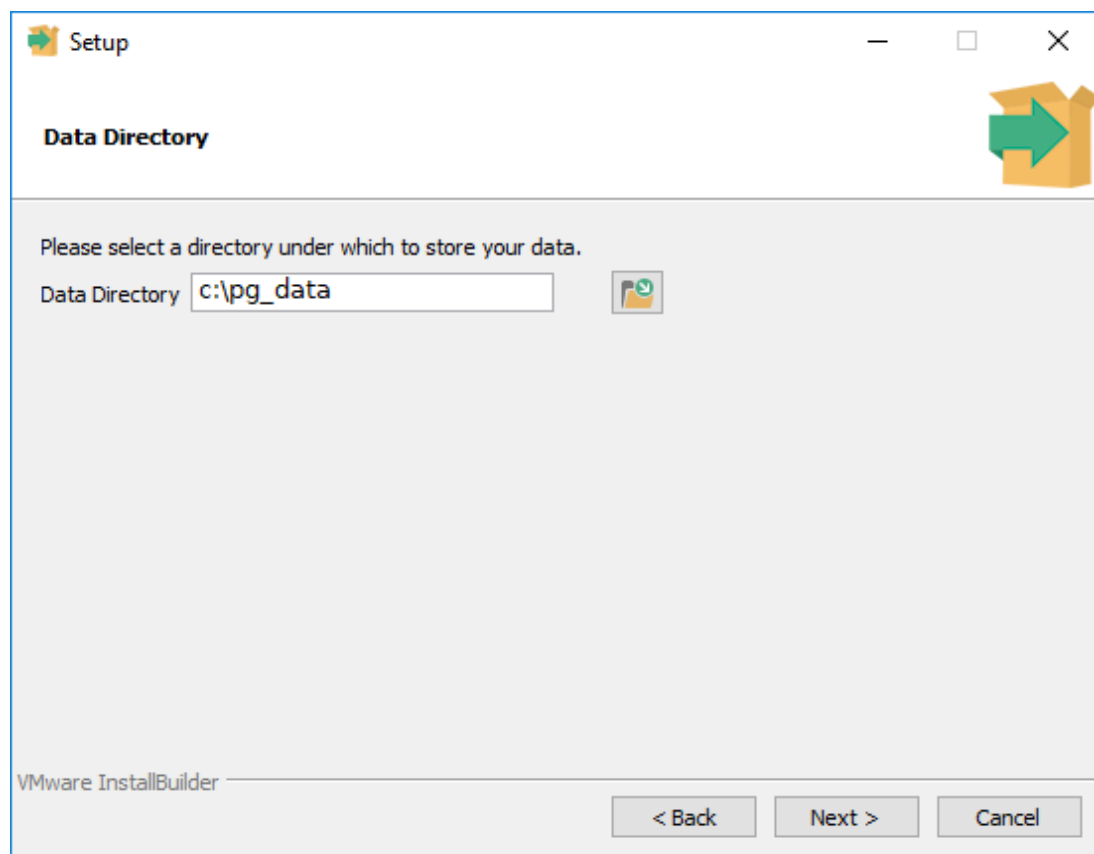
(At stores it's at N:\AppServers\PostgreSQL)



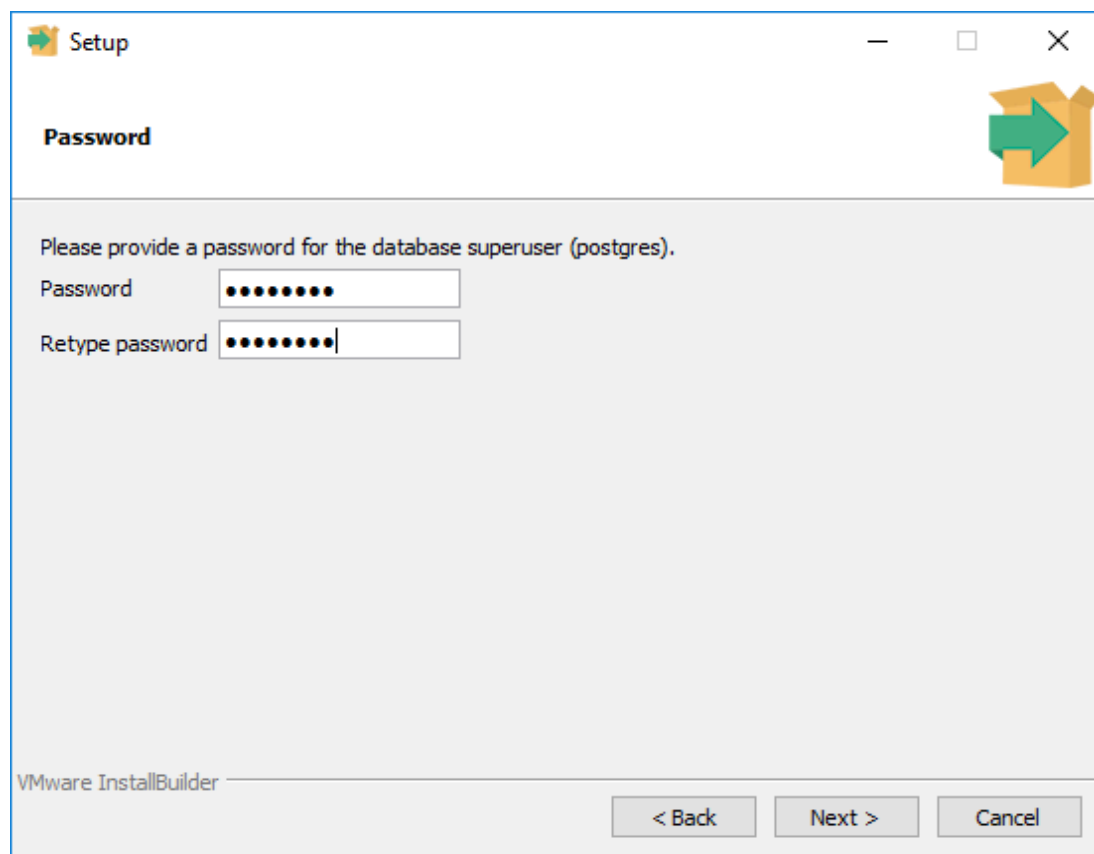
Uncheck Stack Builder:



Set the Data folder somewhere easier to find and not PostgreSQL version specific:
Recommended: C:\pg_data



Set password to "sa"



Rest of the options are fine to leave as default, just NEXT through all of them and begin the install:

Setup

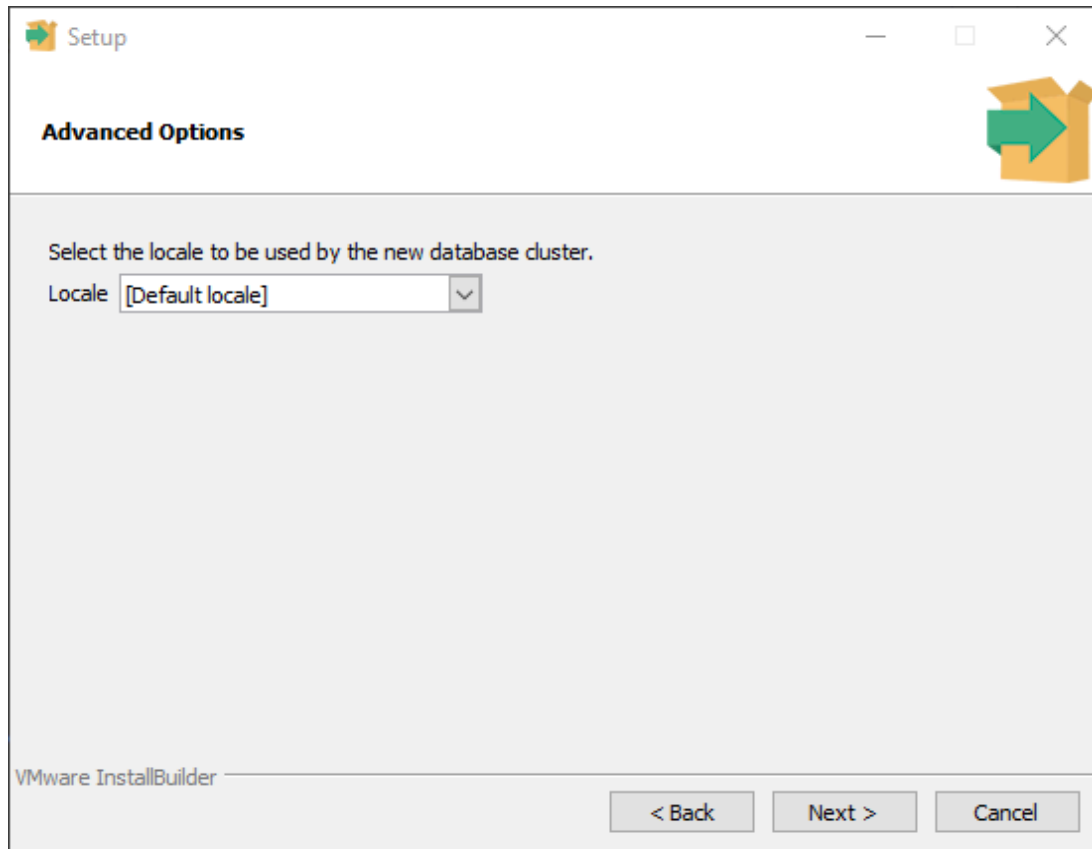
Port

Please select the port number the server should listen on.

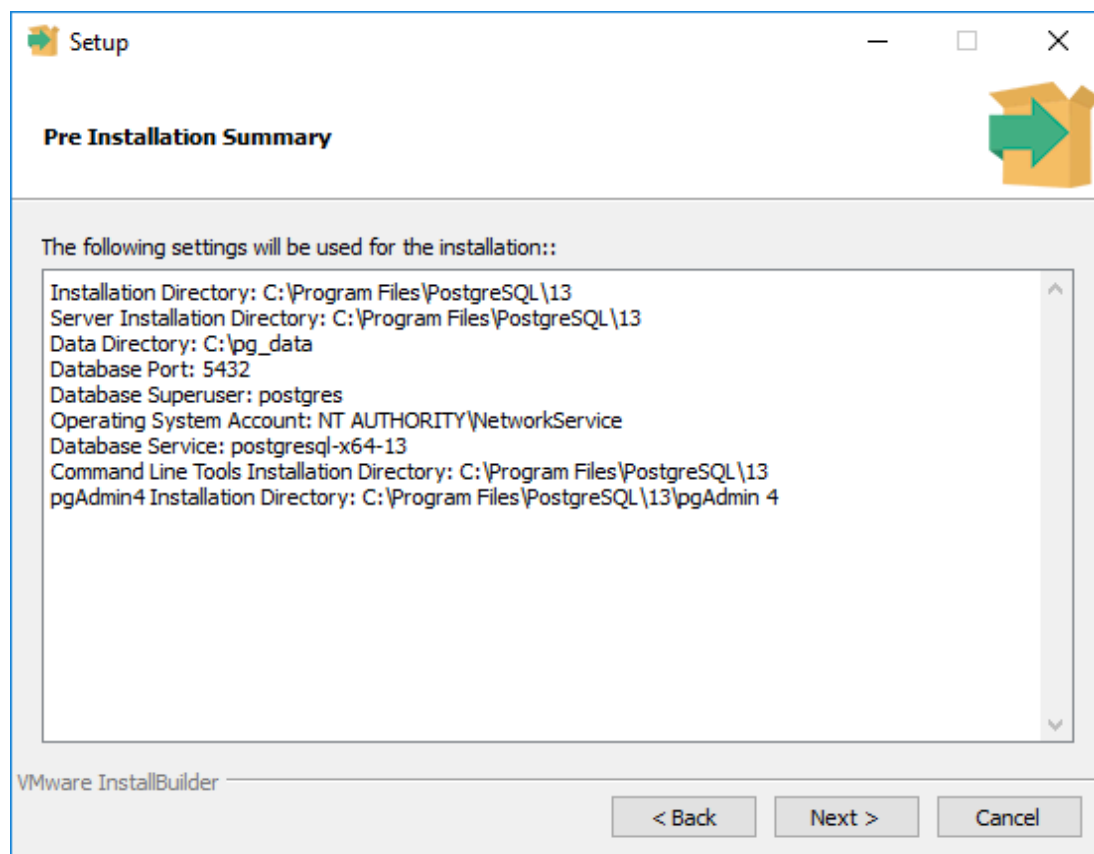
Port

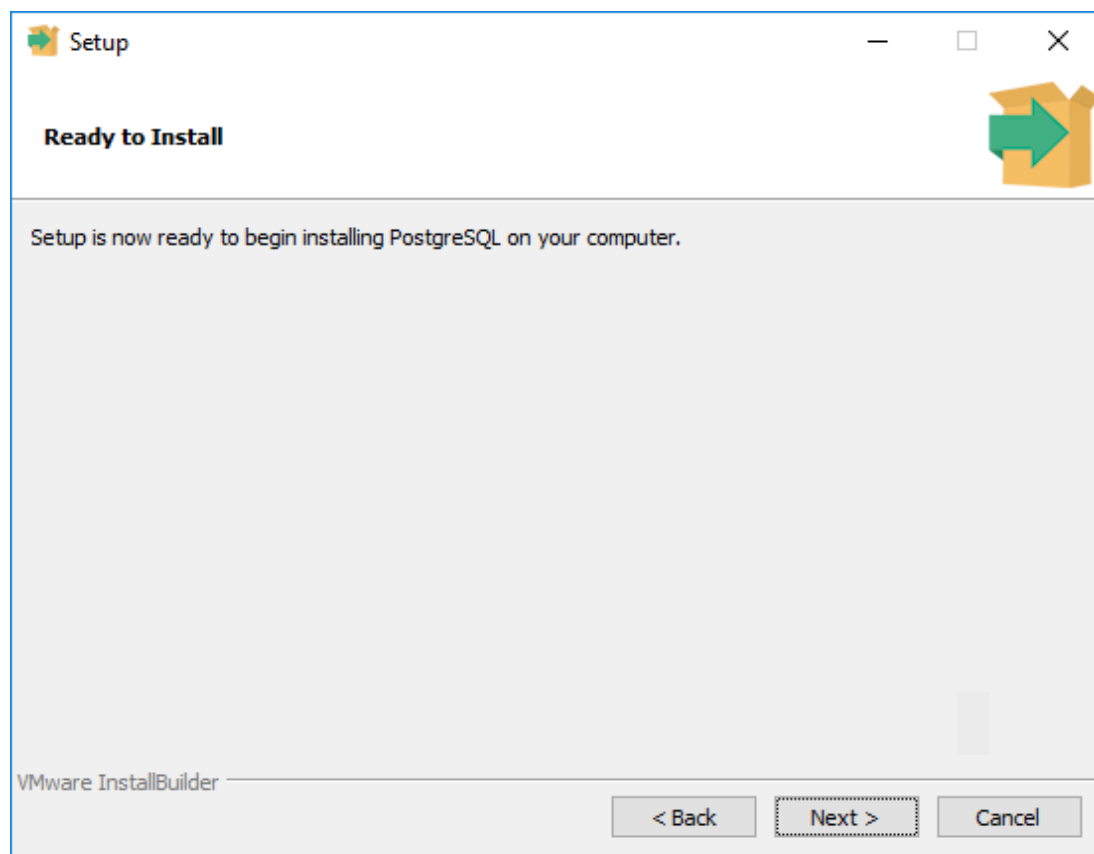
VMware InstallBuilder

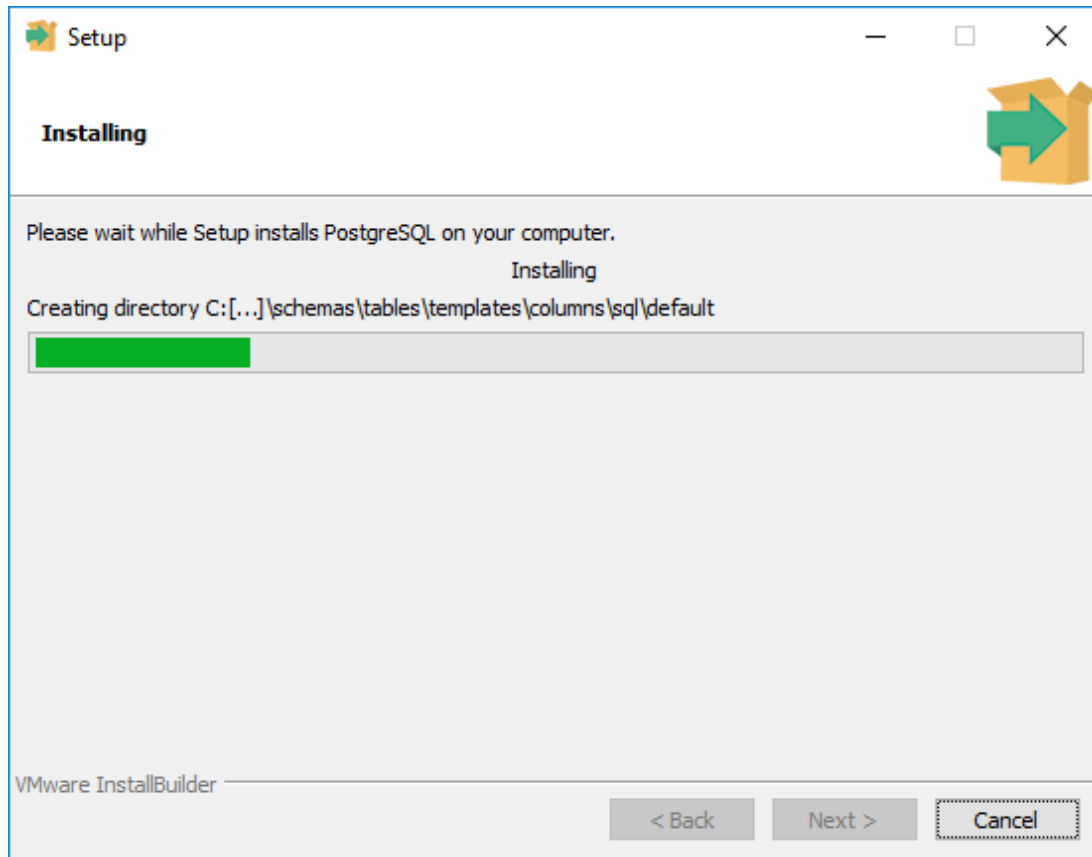
< Back Next > Cancel

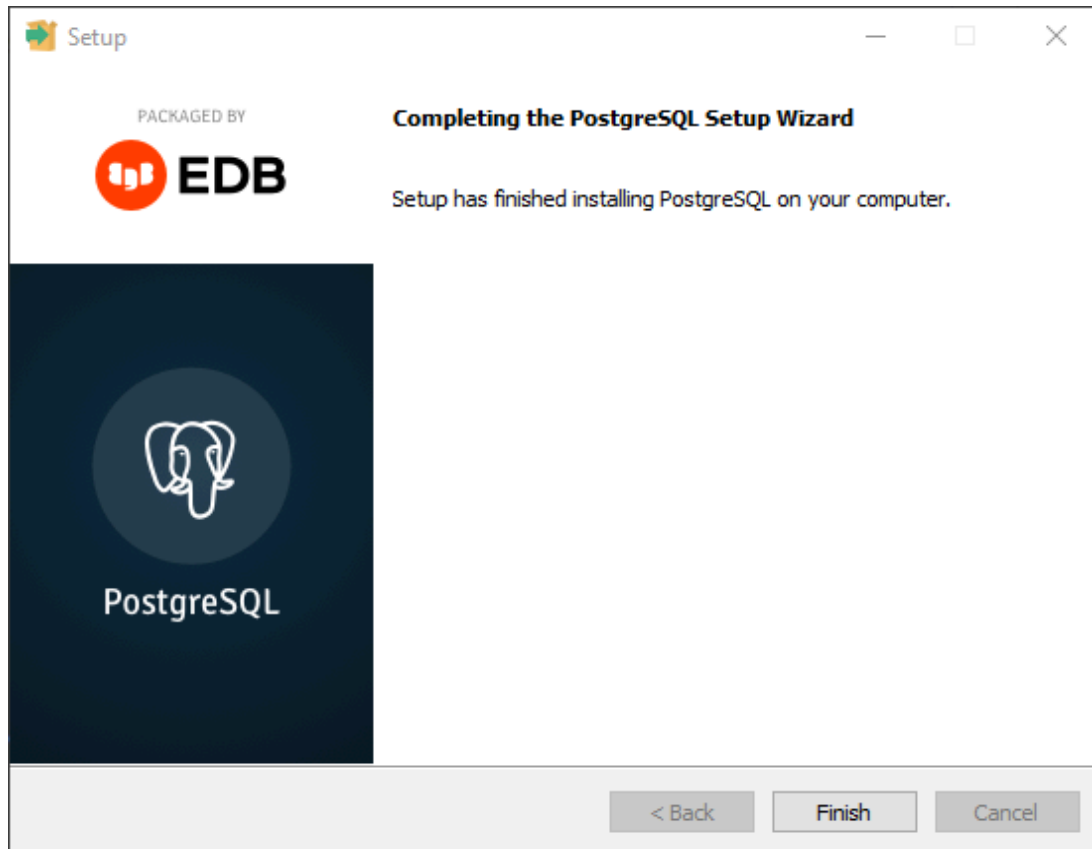


In the following step right before the install starts all the setting values are displayed. It may be useful to copy/paste this information somewhere for later reference.









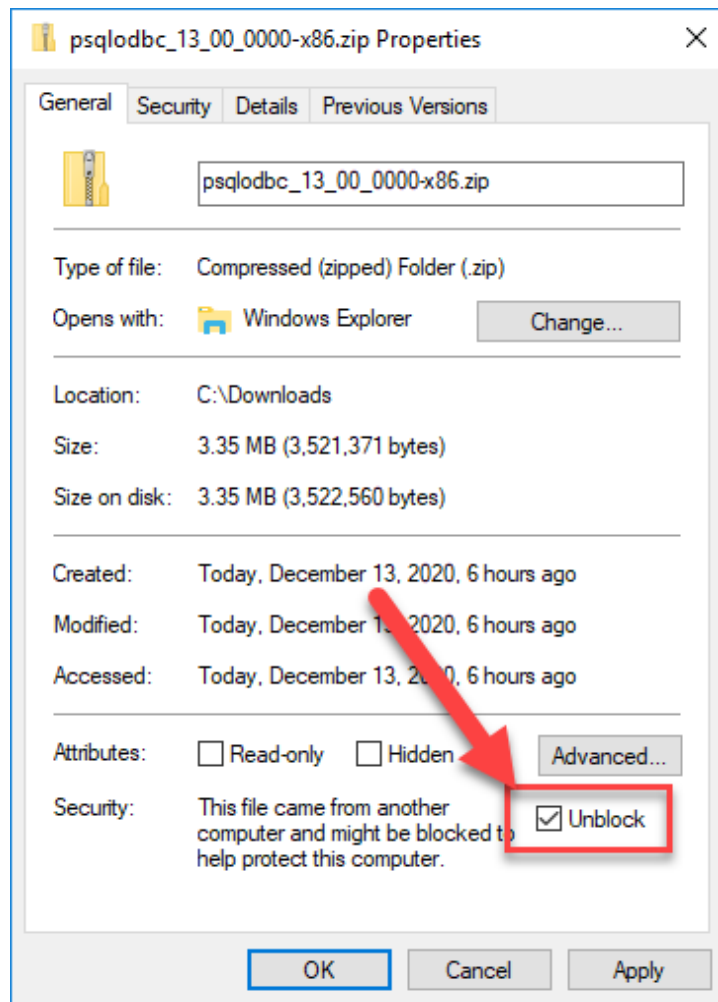
ODBC Driver Install

Go to
[https://www.postgresql.org/ftp/](https://www.postgresql.org/ftp/odbc/versions/msi/)

odbc/versions/msi/

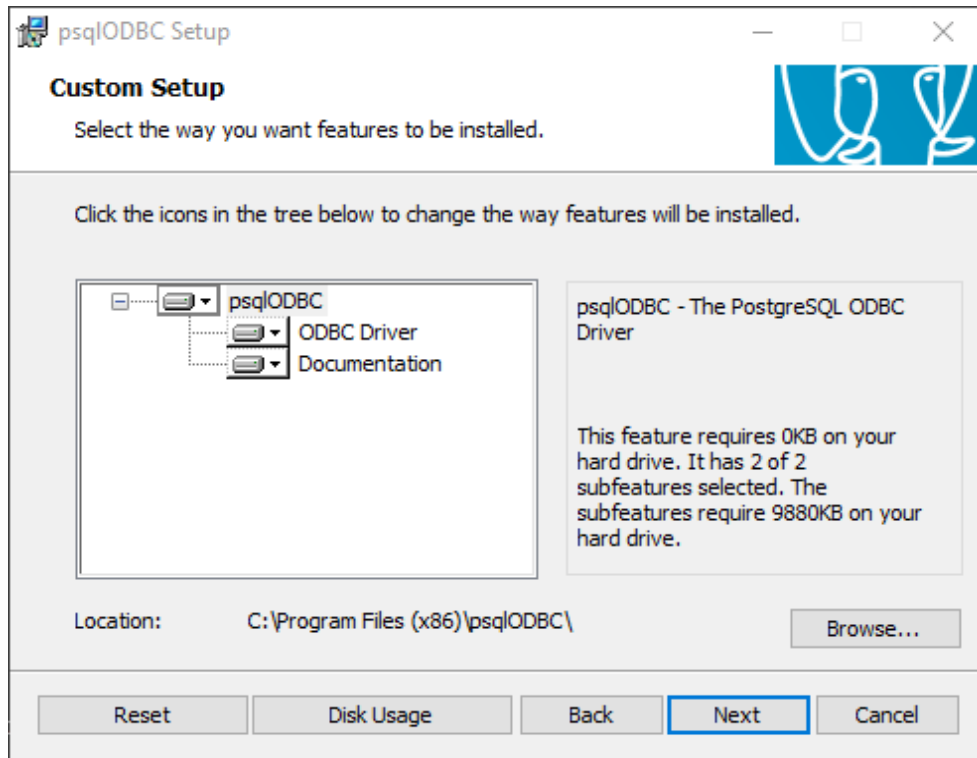
Download the "**x86**" **32 Bit (64 Bit won't work with 32 Bit systems)** ODBC driver zip file most closely corresponding to the above PostgreSQL DB version you installed. (It's fine for the DB to be 64 Bit, and ODBC driver to be 32 Bit)

After downloading the zip file, right click on it, go to properties and check the "Unblock" checkbox:

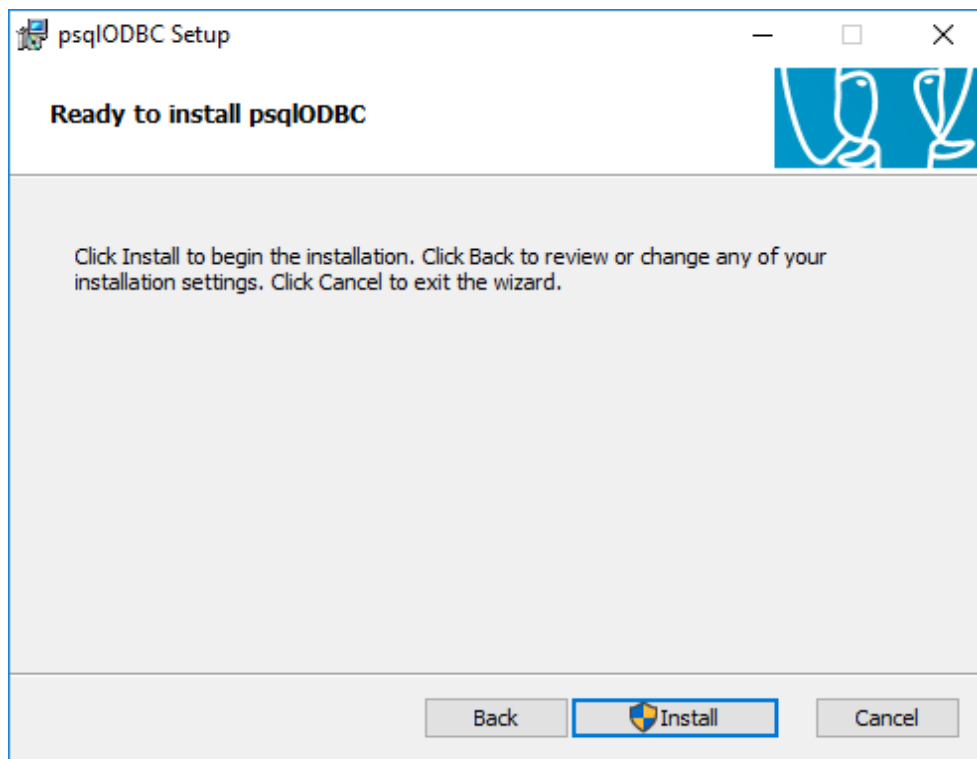


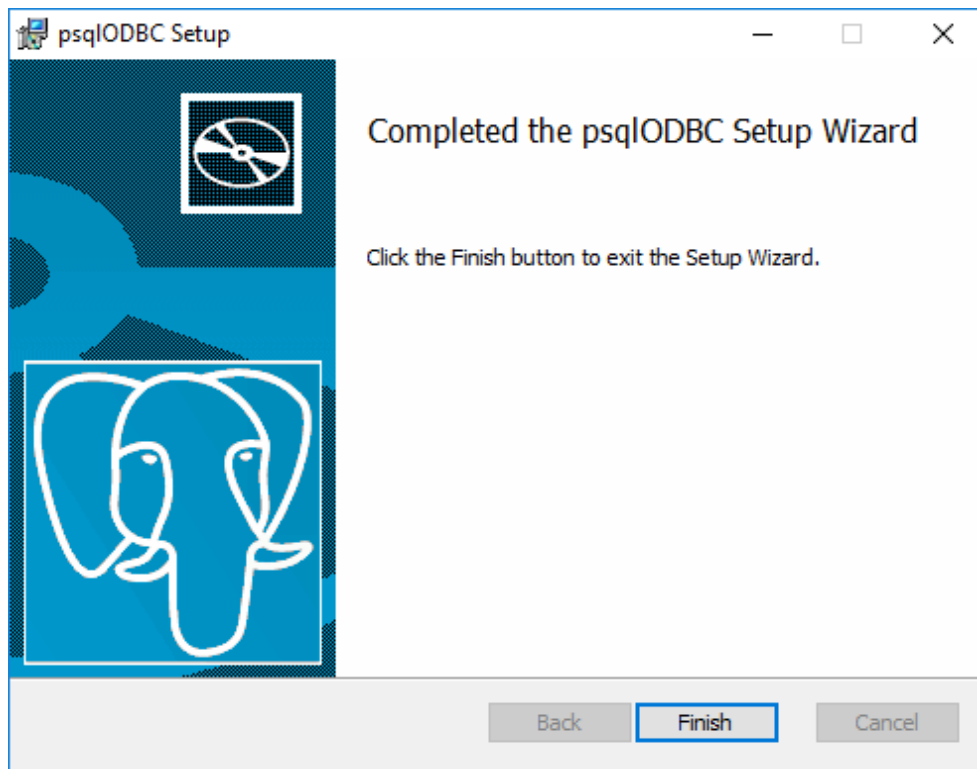
Press okay, open the zip file and run the **psqlodbc_x86.msi**.

You can choose to add the Documentation (but it's not necessary):



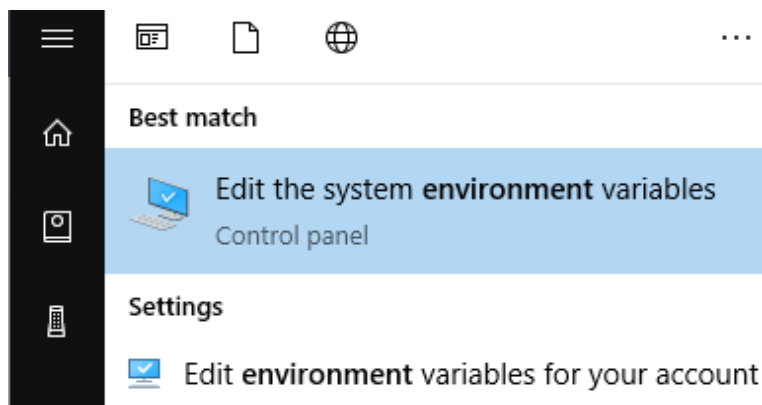
Press Install to complete the installation:



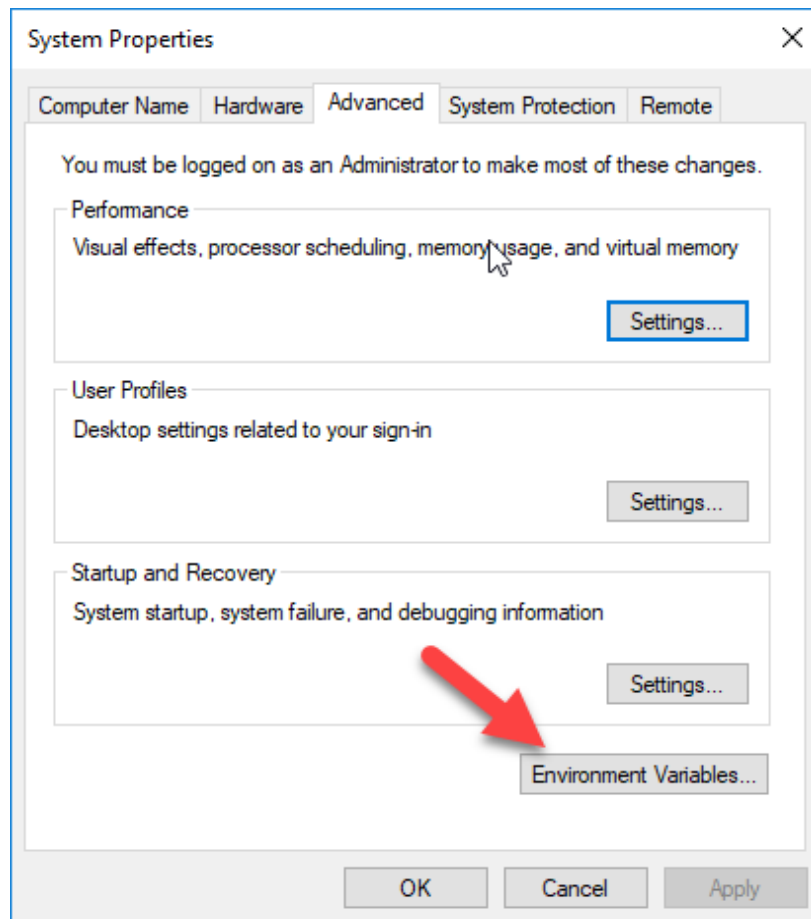


Environment Setup:

On your local laptop press START and type "environment"



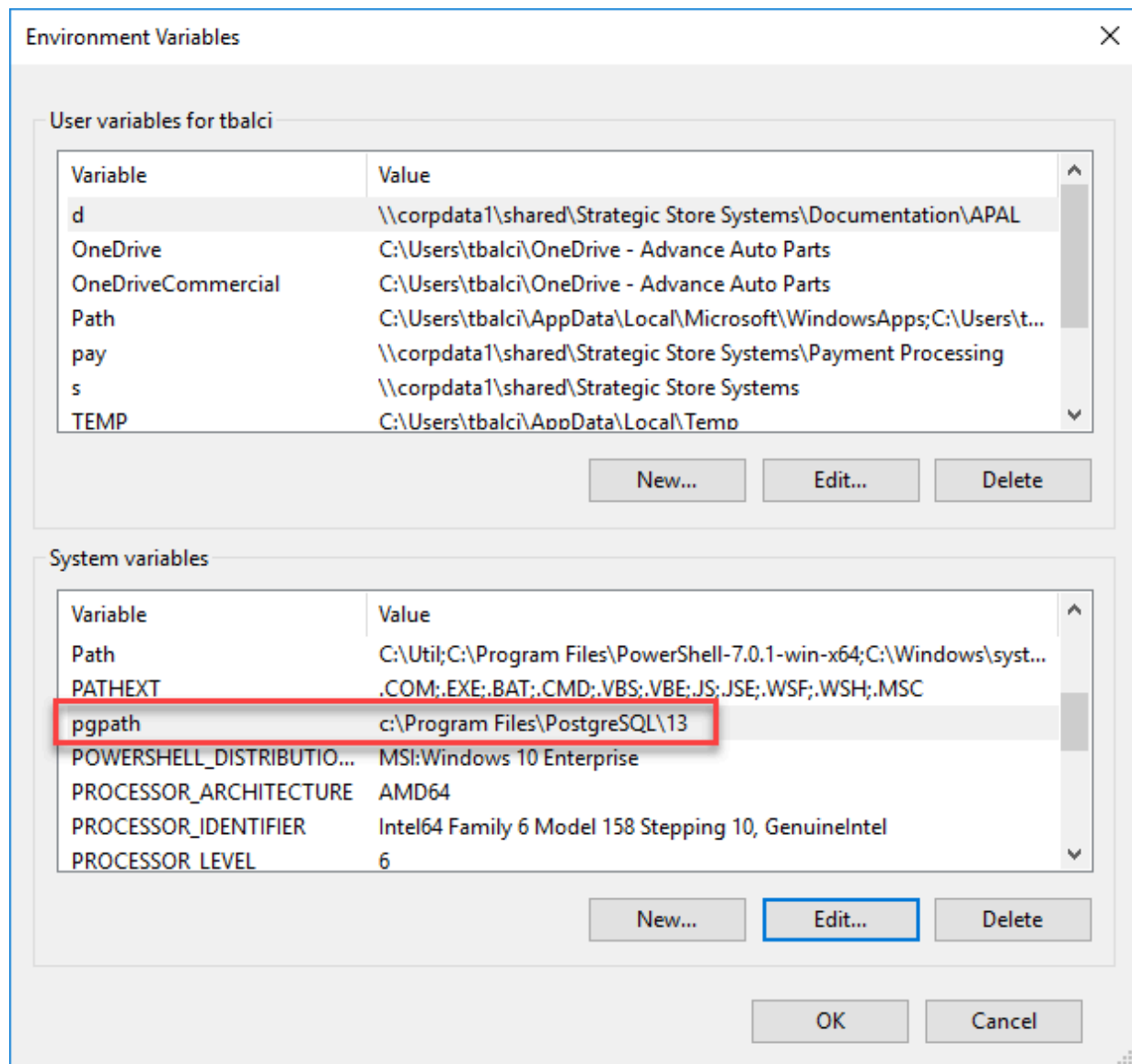
Select "Edit the system environment variables"



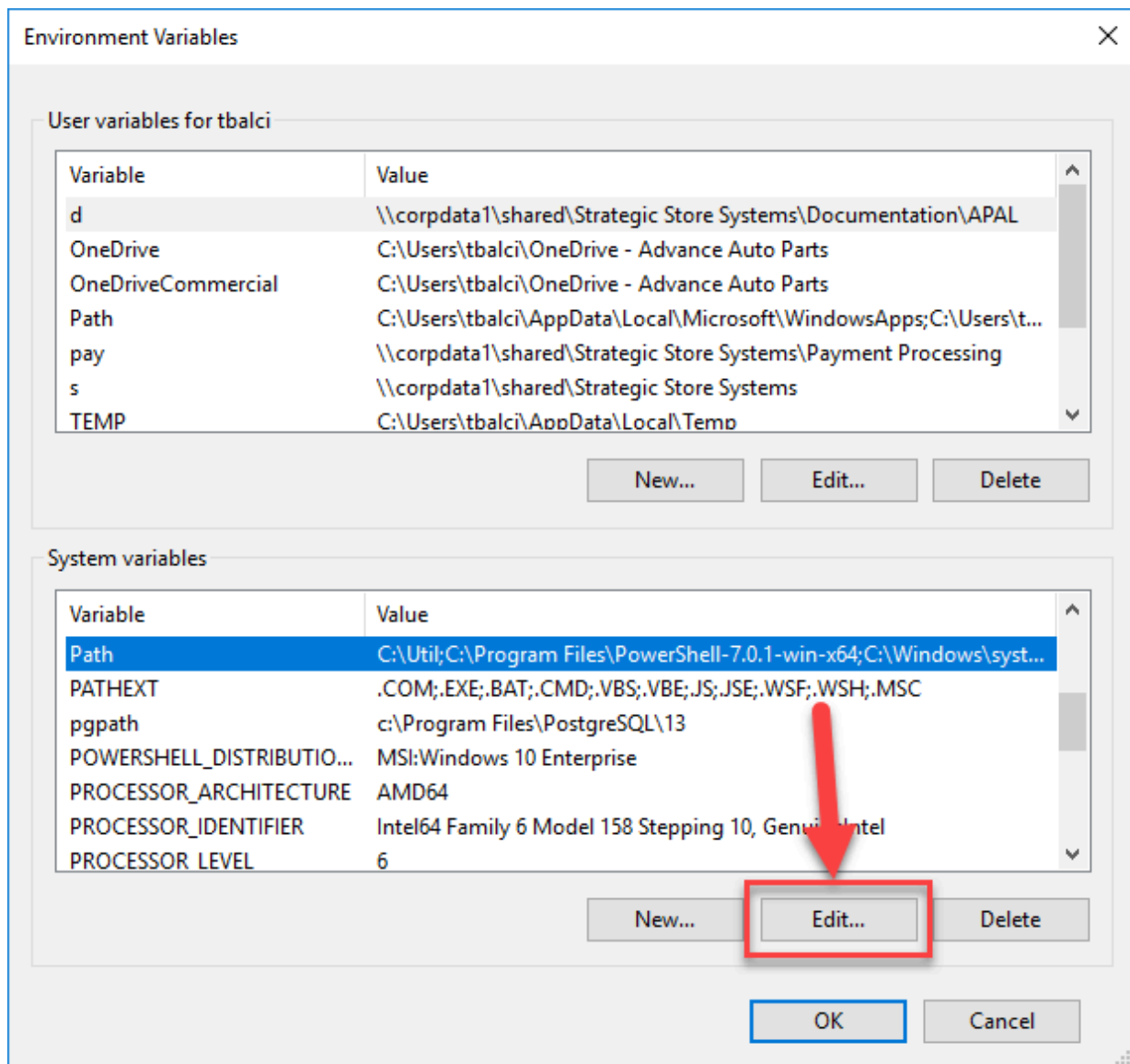
Create a "pgpath" environment variable under SYSTEM VARIABLES:

Variable: pgpath

Value: [where PostgreSQL was installed above] .. in the example it was: c:\Program Files\PostgreSQL\13



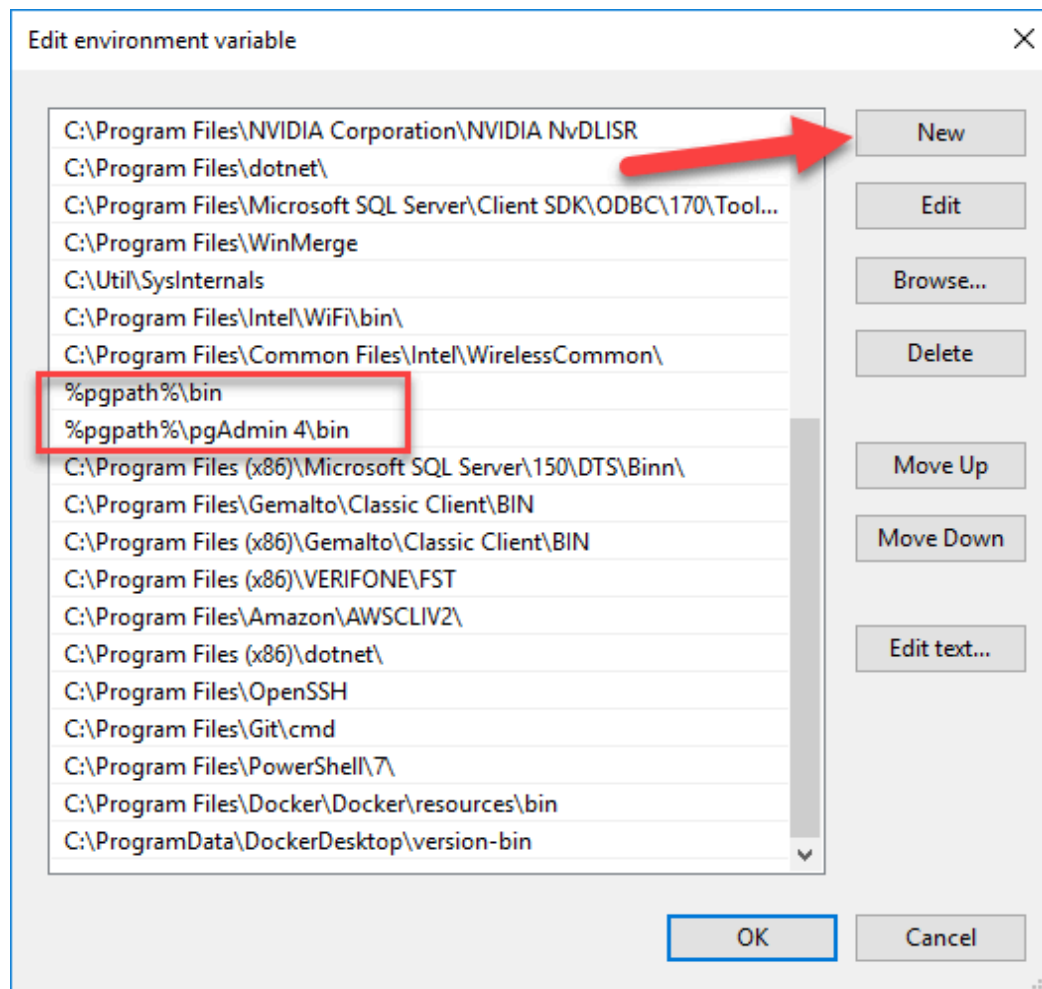
Also under SYSTEM VARIABLES edit the "Path" variable:



Add the following two "New" paths:

%pgpath%\bin

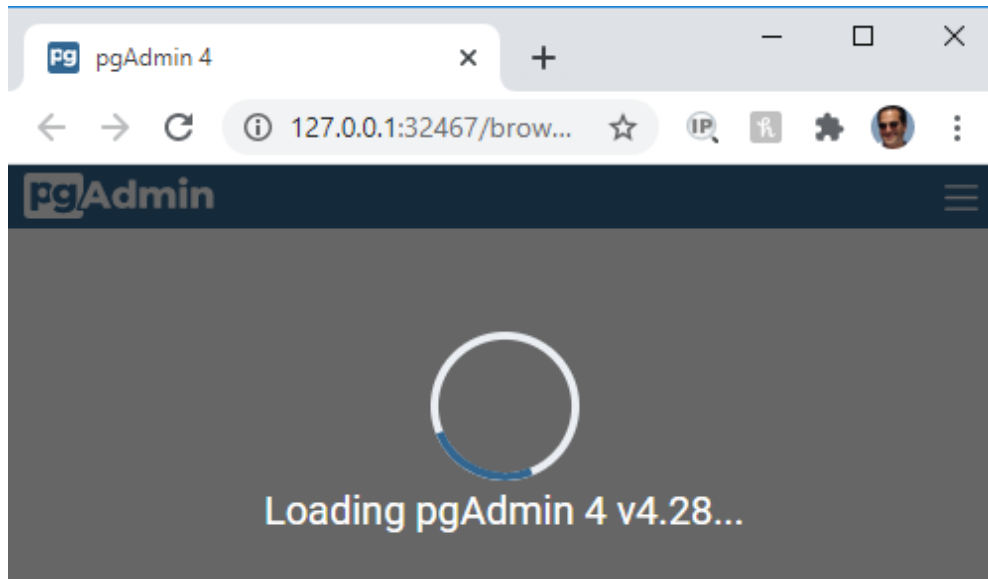
%pgpath%\pgAdmin 4\bin



Test PostgreSQL Install

On your local laptop press START and run PGAdmin 4

If PGAdmin 4 gets stuck launching:



Run this from Admin Powershell:

```
New-PSDrive -PSProvider registry -Root HKEY_CLASSES_ROOT -Name HKCR;  
Set-ItemProperty hkcr:\js -Name "Content Type" -Value "text/javascript";
```

Restart your computer for the changes to take effect.

Note: See for correction: <https://stackoverflow.com/a/64846139/181296>

PostgreSQL Security Configuration to allow C Chains to connect via ODBC

Postgres stores its Host Based Authentication configuration in a file called:

pg_hba.conf

This file is stored in the Postgres data folder (setup above). Above recommendation was to use the following:

[C:\pg_data](#)

C Chains Stores have this file stored at:

[N:\AppServers\PostgreSQL\data](#)

In the pg_hba.conf go to the bottom of the file for all the connections:

- Set the "METHOD" TO "trust". They are probably initially set to MD5 or scram-sha-256.
- Save the file. No need to restart Postgres or any other services/applications.

#	TYPE	DATABASE	USER	ADDRESS	METHOD
# "local" is for Unix domain socket connections only					
	local	all	all		scram-sha-256
# IPv4 local connections:					
	host	all	all	127.0.0.1/32	scram-sha-256
# IPv6 local connections:					
	host	all	all	:::1/128	scram-sha-256
# Allow replication connections from localhost, by a user with the					
# replication privilege.					
	local	replication	all		scram-sha-256
	host	replication	all	127.0.0.1/32	scram-sha-256
	host	replication	all	:::1/128	scram-sha-256

SHOULD BE:

```
#
# If you want to allow non-local connections, you need to add more
# "host" records. In that case you will also need to make PostgreSQL
# listen on a non-local interface via the listen_addresses
# configuration parameter, or via the -i or -h command line switches.
```

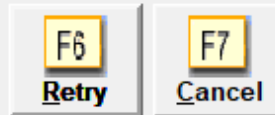
#	TYPE	DATABASE	USER	ADDRESS	METHOD
# "local" is for Unix domain socket connections only					
	local	all	all		trust
# IPv4 local connections:					
	host	all	all	127.0.0.1/32	trust
# IPv6 local connections:					
	host	all	all	:::1/128	trust
# Allow replication connections from localhost, by a user with the					
# replication privilege.					
	local	replication	all		trust
	host	replication	all	127.0.0.1/32	trust
	host	replication	all	:::1/128	trust

If you fail to make the above change or fail to install the ODBC driver, when you run C Chains you will receive:

Cannot connect to data server



There are no connections available to a data server - cannot launch APAL. The connection will be checked periodically and APAL will restart automatically when a connection is made. You may also retry the connection manually by selecting F6 - Retry.



C Chains SETUP

If it hasn't already been done, in WSPATHS.TPS change pathid 160, 170, 161, and 171 database variable to store_dbXX (Where XX is the BUILD ##)

TopSpeed Database Scanner (\WSPATHS.TPS)					
File Edit View Column Help					
Rec No	Path Id	Local	Remote	Path Descript	
1	1	.\DATA	.\DATA	Local Path Descriptor	
2	2	n:\windss\data	.\DATA	Server Path Descriptor	
4	255	.\	.\	WinCheck Current Directory	
5	20	.\NODESYS	.\	Installation Path for NODECOMM.EXE	
6	50	.\DATA\LANGUAGE	.\DATA\LANGUAGE	Language Translation Files location	
7	5	.\journal	.\journal	Electronic Journal Files	
8	6	.\DATA	.\DATA	JDA PRISM(tm) Files	
9	7	.\data\printer	.\data\printer	Path to printer data	
10	8	.\data\compeng	.\data\compeng	Path to component engine data	
11	9	.\	.\	Win/DSS Execution Path	
12	22	.\data	.\data	Transaction Control File (TCF)	
13	30	n:\windss\journal	.\journal	Electronic Journal Server Files	
14	70	n:\windss\data	.\DATA	SERVx files path	
15	110	.\DATA\PMPTFMT	.\DATA\PMPTFMT	Path to PRISM belt printer format files	
16	80	.\htmlview.exe	.\htmlview.exe	Intranet	
17	90	.\htmlview.exe	.\htmlview.exe	email	
18	160	postgres clarion primary connection	postgres clarion primary connection	DRIVER=PostgreSQL ANSI;SERVER=localhost;PORT=5432;DATABASE=store_db24;UID=postgres;PWD=Advance1.B6=1;	
19	170	postgres clarion secondary connection	postgres clarion secondary connection	DRIVER=PostgreSQL ANSI;SERVER=localhost;PORT=5432;DATABASE=store_db24;UID=postgres;PWD=Advance1.B6=1;	
20	60	n:\windss\ams	.\ams	AMS data files	
21	100	.\htmlview.exe	.\htmlview.exe	Credit Application	
22	120	.\htmlview.exe	.\htmlview.exe	APAL Help	
23	130	.\htmlview.exe	.\htmlview.exe	EPC Fluid	
24	140	.\htmlview.exe	.\htmlview.exe	Second Source	
25	150	.\htmlview.exe	.\htmlview.exe	SELFHELP	
26	15	n:\windss\central_inventory	.\central_inventory		
27	161	postgres .net primary connection	postgres .net primary connection	Server=localhost;Port=5432;User Id=postgres;Password=Advance1;Database=store_db24;	
28	171	postgres .net secondary connection	postgres .net secondary connection	Server=localhost;Port=5432;User Id=postgres;Password=Advance1;Database=store_db24;	

DATA COPY

That's it! Postgres is now installed. You are almost ready to use it with C Chains. Now you just need to